



## Annual Evaluation Data Report to the Governance Council: Follow up Data Analysis

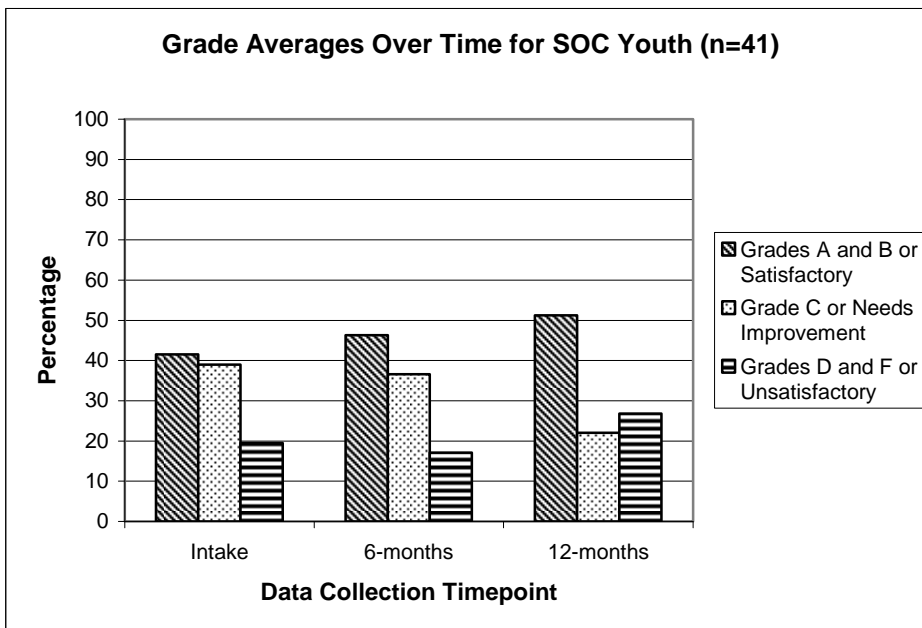
### School Performance: Changes in SOC Youth Grade Averages Over Time and Split by Gender

This report was created as a follow up to the Annual Data Report to the Governance Council evaluation presentation that occurred at the Governance Council meeting in October 2007. *The topic presented was requested by a Governance Council member during the discussion portion of the presentation.*

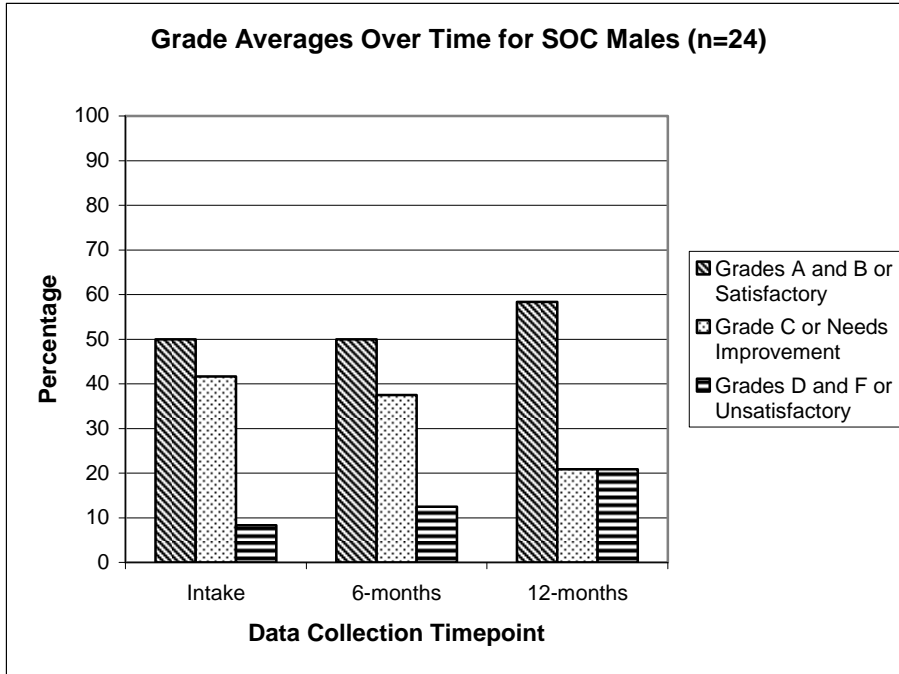
**Annual Data Report:** Reported changes in school performance over time. Intake was compared to 12-month data and each youth was assigned a score of “improved”, “remained stable”, or “deteriorated” in the past 6 months prior to the data collection timepoint. For example if a youth received a grade average of C at intake and B at 12-months, their performance “improved.” Details on distribution of grades were not provided.

**Requested Additional Information Presented Below:** Includes details about distribution of SOC youth grade averages, and what changes in grade averages look like over time. Data has been split by gender. All data is longitudinal (i.e. looks at the same group of youth at all timepoints).

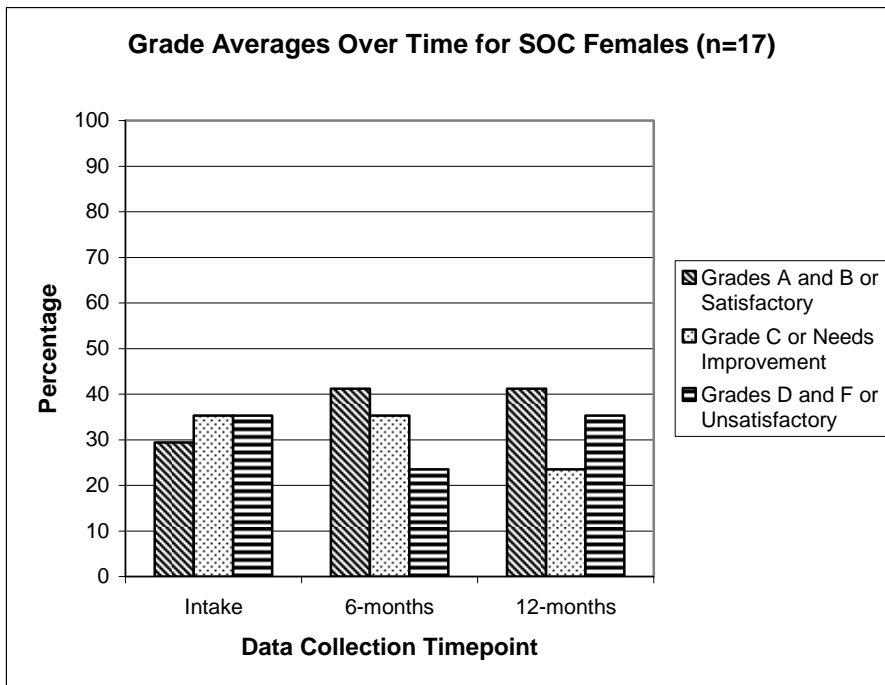
Note: Grade averages were obtained from caregivers (versus school records) and refer to school performance over the 6 months prior to the data collection timepoint. Categories were collapsed to ease interpretation of data, and allow youth that are not graded on the A-F system to be included in the dataset.



- Approximately ½ of SOC youth that earned A’s, B’s or an assignment of Satisfactory at all timepoints. The percentage of youth in this category increased from 42% at intake to 51% at 12-months.
- The percentage of youth whose grade average was D, F, or Unsatisfactory was lowest at the 6-month timepoint (20%) and highest at the 12-month timepoint (27%).



- The percentage of males earning an A, B, or Satisfactory grade average increased over time from 50% at intake to 58% at 12-months.
- The percentage of males receiving D's, F's, or an assignment of Unsatisfactory went from 8% at intake to 21% at 12-months.



- The percentage of females that earned an A, B, or Satisfactory grade average increased from 29% at Intake to 41% at 12-months.
- The percentage of female that earned a D, F, or Unsatisfactory grade average was the same (35%) at Intake and 12-months.